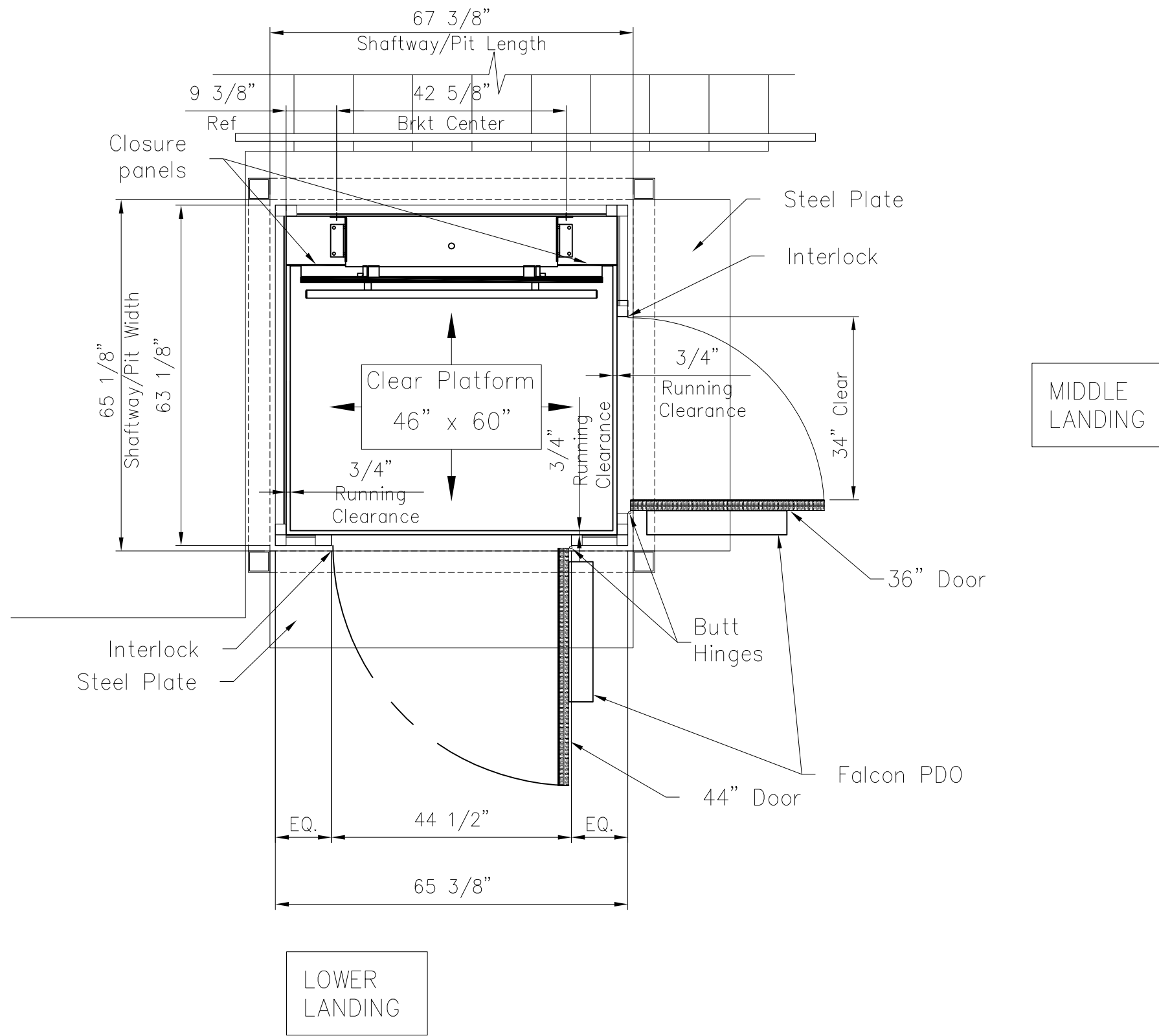


Note:
 -Lift Frame Infill Panels to be 1/4" Lam. Glass, w/ 1" Sq. Welded Mesh (Natural Fin.) Outside of Glass (On mast side)
 -Doors to be Stl Angle Frame around 2 Layers 3/4" PWD Finished per spec
 -Steel to be natural finished
 -Car Floor Finish to be Diamond Plate



LOWER & MID LANDING PLAN VIEW

LIFT DIMENSIONS - SEE PG 3 FOR TRADE COORDINATION

GC NOTE: ALL CRITICAL SITE CONDITIONS MUST BE VERIFIED IN THE FIELD AFTER THE AREA HAS BEEN PREPARED AND PRIOR TO THE LIFT BEING RELEASED. EXTRA COSTS INCURRED WITH MODIFYING THE UNIT AT THE FACTORY BY THE MANUFACTURER DUE TO CHANGES IN THE SITE CONDITIONS WILL BE THE RESPONSIBILITY OF THE GENERAL CONTRACTOR. TOLERANCES IN FIELD DIMENSIONS ARE +/- 1/8 INCH; NOTIFICATION TO HANDI-LIFT OF ANY VARIATIONS FROM THIS TOLERANCE IS THE RESPONSIBILITY OF THE GENERAL CONTRACTOR.

The information contained in this drawing constitutes the Intellectual Property, including, but not limited to knowledge, trade secrets, and proprietary information which is the exclusive property of Handi-Lift, Inc. All information contained in this drawing is to be held in the strictest confidence by the recipient, and is not to be copied, disclosed to, or transmitted to any third parties without the express written authorization of Handi-Lift, Inc. ©2008 Handi-Lift, Inc.

CODE NOTE
 THIS INSTALLATION SHALL COMPLY WITH 2008 NYC BUILDING CODE WITH JAN. 1-DEC. 31, 2011 SUPPLEMENT, AND ASME A18.1 1999, WITH ADDENDA A18.1a-2001 PART 2.

REVISION 1	10-3-13 JC
REVISION 2	10-11-13 JC

NOT TO SCALE

WILLIAM MADDEN P. E.
 63 MARY STREET
 LODI, NEW JERSEY 07644

HANDILIFT
 HANDI-LIFT, INC.
 730 GARDEN STREET
 CARLSTADT, NEW JERSEY 07072 U.S.A.
 PH: (800) 432-LIFT FAX: (201) 933-0050
 INTERNET ADDRESS: www.handi-lift.com

DRAWN BY	BK	CHECKED BY	DB
----------	----	------------	----

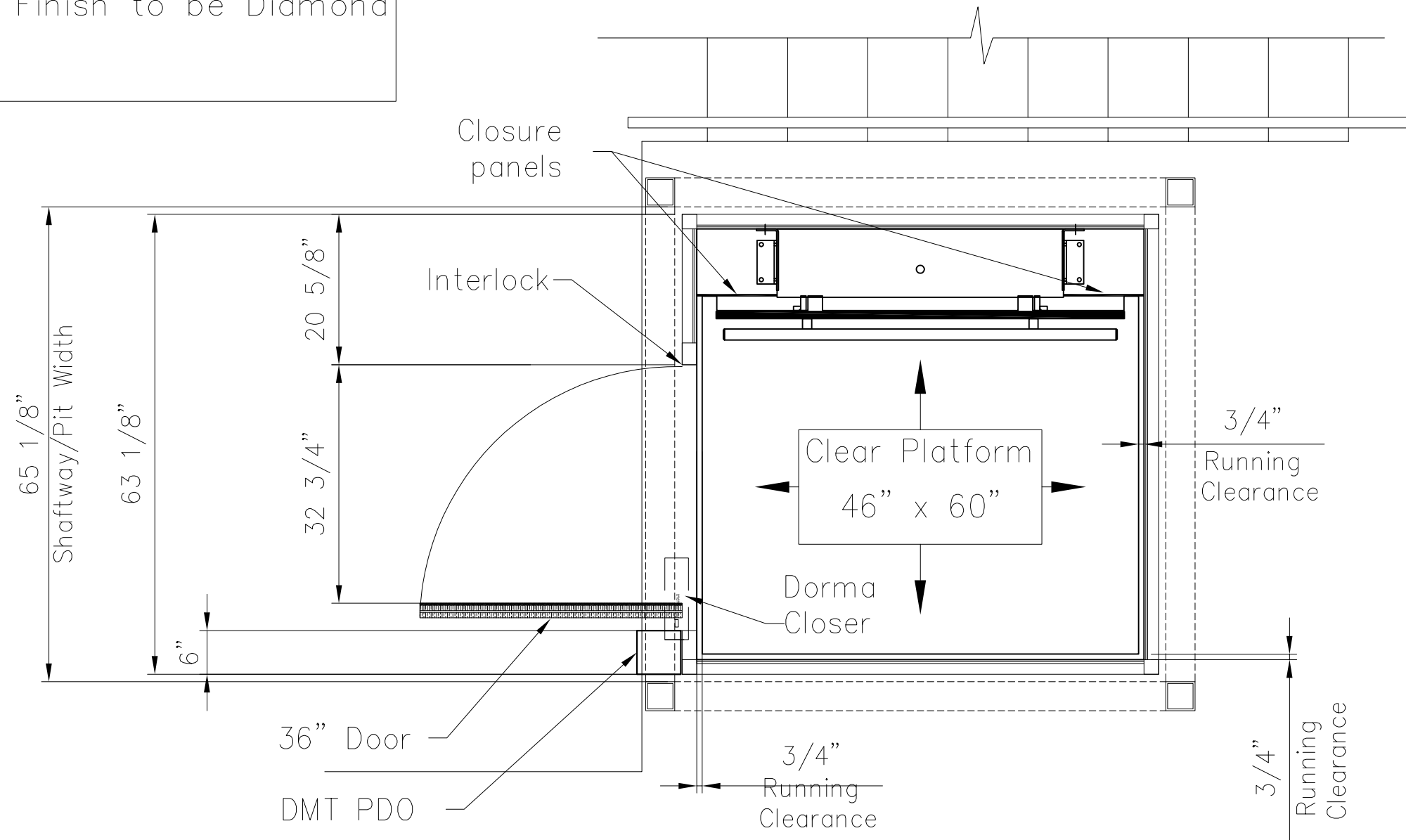
LOCATION:
 URBAN OUTFITTERS
 98 NORTH 6TH ST
 BROOKLYN, NY 11211

DATE:	PROJECT NO.
08-28-2013	13H08-1

TYPE OF LIFT:	PAGE NO.
GVL-SW-120	1 OF 11

Note:
 -Lift Frame Infill Panels to be 1/4" Lam. Glass, w/ 1" Sq. Welded Mesh (Natural Fin.) Outside of Glass (On mast side)
 -Doors to be Stl Angle Frame around 2 Layers 3/4" PWD Finished per spec
 -Steel to be natural finished
 -Car Floor Finish to be Diamond Plate

UPPER LANDING



UPPER LANDING PLAN VIEW

GC NOTE: ALL CRITICAL SITE CONDITIONS MUST BE VERIFIED IN THE FIELD AFTER THE AREA HAS BEEN PREPARED AND PRIOR TO THE LIFT BEING RELEASED, EXTRA COSTS INCURRED WITH MODIFYING THE UNIT AT THE FACTORY BY THE MANUFACTURER DUE TO CHANGES IN THE SITE CONDITIONS WILL BE THE RESPONSIBILITY OF THE GENERAL CONTRACTOR. TOLERANCES IN FIELD DIMENSIONS ARE +/- 1/8 INCH; NOTIFICATION TO HANDI-LIFT OF ANY VARIATIONS FROM THIS TOLERANCE IS THE RESPONSIBILITY OF THE GENERAL CONTRACTOR.

The information contained in this drawing constitutes the Intellectual Property, including, but not limited to knowledge, trade secrets, and proprietary information which is the exclusive property of Handi-Lift, Inc. All information contained in this drawing is to be held in the strictest confidence by the recipient, and is not to be copied, disclosed to, or transmitted to any third parties without the express written authorization of Handi-Lift, Inc. ©2008 Handi-Lift, Inc.

CODE NOTE
 THIS INSTALLATION SHALL COMPLY WITH 2008 NYC BUILDING CODE WITH JAN. 1-DEC. 31, 2011 SUPPLEMENT, AND ASME A18.1 1999, WITH ADDENDA A18.1a-2001 PART 2.

REVISION 1	10-3-13 JC
REVISION 2	10-11-13 JC

NOT TO SCALE

WILLIAM MADDEN P. E.
 63 MARY STREET
 LODI, NEW JERSEY 07644

HANDILIFT
 HANDI-LIFT, INC.
 730 GARDEN STREET
 CARLSTADT, NEW JERSEY 07072 U.S.A.
 PH: (800) 432-LIFT FAX: (201) 933-0050
 INTERNET ADDRESS: www.handi-lift.com

DRAWN BY	BK	CHECKED BY	DB
----------	----	------------	----

LOCATION:
 URBAN OUTFITTERS
 98 NORTH 6TH ST
 BROOKLYN, NY 11211

DATE:	PROJECT NO.
08-28-2013	13H08-1

TYPE OF LIFT:	PAGE NO.
GVL-SW-120	2 OF 11

ELECTRICAL

- (1) FIELD ELECTRICAL WIRING AND CONNECTIONS FROM HALL STATIONS, INTERLOCKS AND POWER DOOR OPERATOR (IF USED) TO CONTROLLER ARE BY HLI.
- (2) RACEWAYS WITH PULL WIRES REQUIRED FROM HALL STATIONS, INTERLOCKS AND POWER DOOR OPERATORS (IF USED) TO CONTROLLER ARE BY OTHERS.
- (3) POWER SUPPLY REQUIRED IS 120VAC SINGLE PHASE, 60 HZ, 20 AMPS ON A DEDICATED LINE BY OTHERS.
- (4) A DISCONNECT INTEGRAL TO EQUIPMENT IS SUPPLIED BY HLI. A SEPARATE FUSED DISCONNECT, IF REQUIRED, IS BY OTHERS.
- (5) EXACT LOCATION OF HALL STATIONS, ACCESS PANEL, DISCONNECT AND MANUAL LOWERING DEVICE (HYDRAULIC DRIVE ONLY) IS TO BE DETERMINED IN THE FIELD.
- (6) ALL AREA LIGHTING AND RUNWAY LIGHTING (NOT LESS THAN 5 FOOT CANDLES) INCLUDING EMERGENCY LIGHTING REQUIRED BY CODE IS BY OTHERS.

GENERAL NOTES:

- (1) A MINIMUM OVERHEAD CLEARANCE OF 6'-8" SHALL BE PROVIDE BETWEEN ANY POINT ON THE PLATFORM AND THE LOWEST OVERHEAD OBSTRUCTION DURING THE ENTIRE DISTANCE OF TRAVEL.
- (2) ANY ALTERATIONS TO THE EQUIPMENT WITHOUT THE WRITTEN AUTHORIZATION BY GARAVENTA WILL VOID ALL WARRANTIES.
- (3) SITE PREPARATION IS BY GC. CLEARANCES ARE CRITICAL AND STRUCTURE ADJACENT TO LIFT MUST BE SMOOTH, FLUSH AND PLUMB WITH FLOOR. FLOOR MUST BE SMOOTH AND LEVEL TO INSURE PROPER FIT AND OPERATION OF THE LIFT.
- (4) ALL FIELD WORK NOT RELATED TO THE LIFT MUST BE COORDINATED WITH HANDI-LIFT INC. PRIOR TO BEGINNING CONSTRUCTION.

GC NOTE: ALL CRITICAL SITE CONDITIONS MUST BE VERIFIED IN THE FIELD AFTER THE AREA HAS BEEN PREPARED AND PRIOR TO THE LIFT BEING RELEASED. EXTRA COSTS INCURRED WITH MODIFYING THE UNIT AT THE FACTORY BY THE MANUFACTURER DUE TO CHANGES IN THE SITE CONDITIONS WILL BE THE RESPONSIBILITY OF THE GENERAL CONTRACTOR. TOLERANCES IN FIELD DIMENSIONS ARE +/- 1/8 INCH; NOTIFICATION TO HANDI-LIFT OF ANY VARIATIONS FROM THIS TOLERANCE IS THE RESPONSIBILITY OF THE GENERAL CONTRACTOR.

The information contained in this drawing constitutes the Intellectual Property, including, but not limited to knowledge, trade secrets, and proprietary information which is the exclusive property of Handi-Lift, Inc. All information contained in this drawing is to be held in the strictest confidence by the recipient, and is not to be copied, disclosed to, or transmitted to any third parties without the express written authorization of Handi-Lift, Inc. ©2008 Handi-Lift, Inc.

CODE NOTE
THIS INSTALLATION SHALL COMPLY WITH 2008 NYC BUILDING CODE WITH JAN. 1-DEC. 31, 2011 SUPPLEMENT, AND ASME A18.1 1999, WITH ADDENDA A18.1a-2001 PART 2.

REVISION 1	10-3-13 JC
REVISION 2	10-11-13 JC

NOT TO SCALE

WILLIAM MADDEN P. E.
63 MARY STREET
LODI, NEW JERSEY 07644

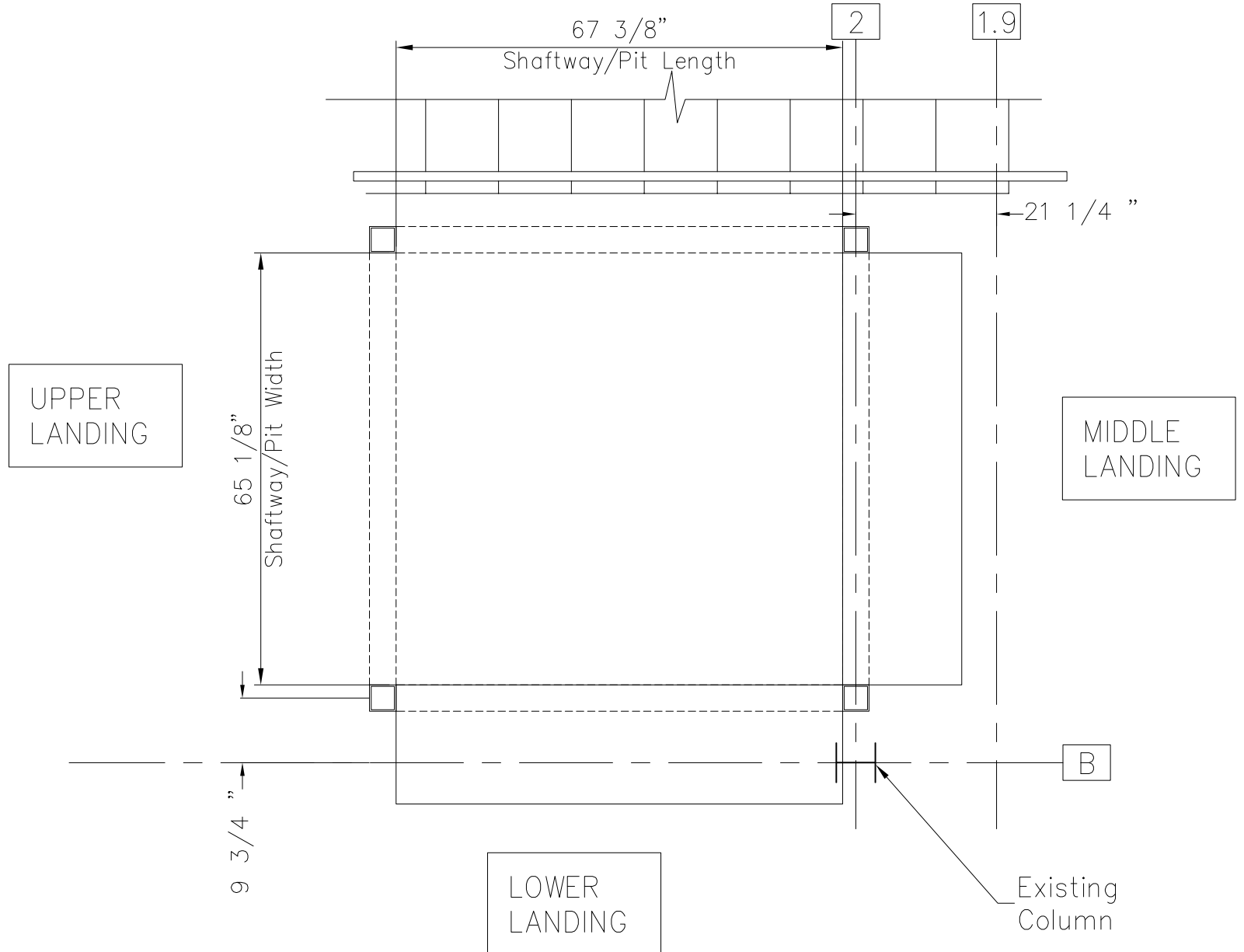
HANDiLiFT
HANDI-LIFT, INC.
730 GARDEN STREET
CARLSTADT, NEW JERSEY 07072 U.S.A.
PH: (800) 432-LIFT FAX: (201) 933-0050
INTERNET ADDRESS: www.handi-lift.com

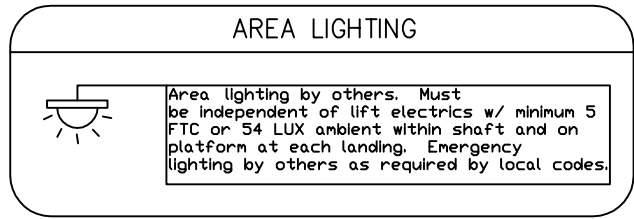
DRAWN BY	BK	CHECKED BY	DB
-----------------	-----------	-------------------	-----------

LOCATION:
URBAN OUTFITTERS
98 NORTH 6TH ST
BROOKLYN, NY 11211

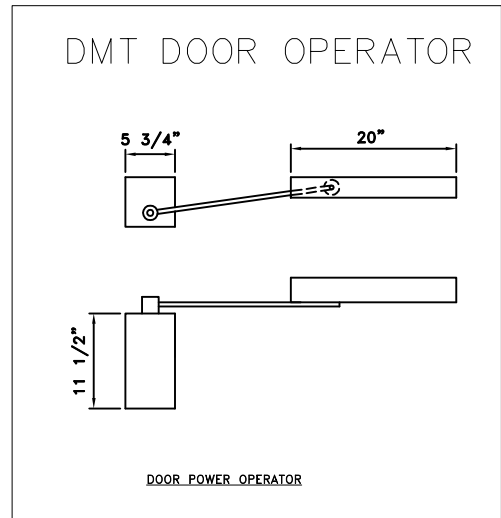
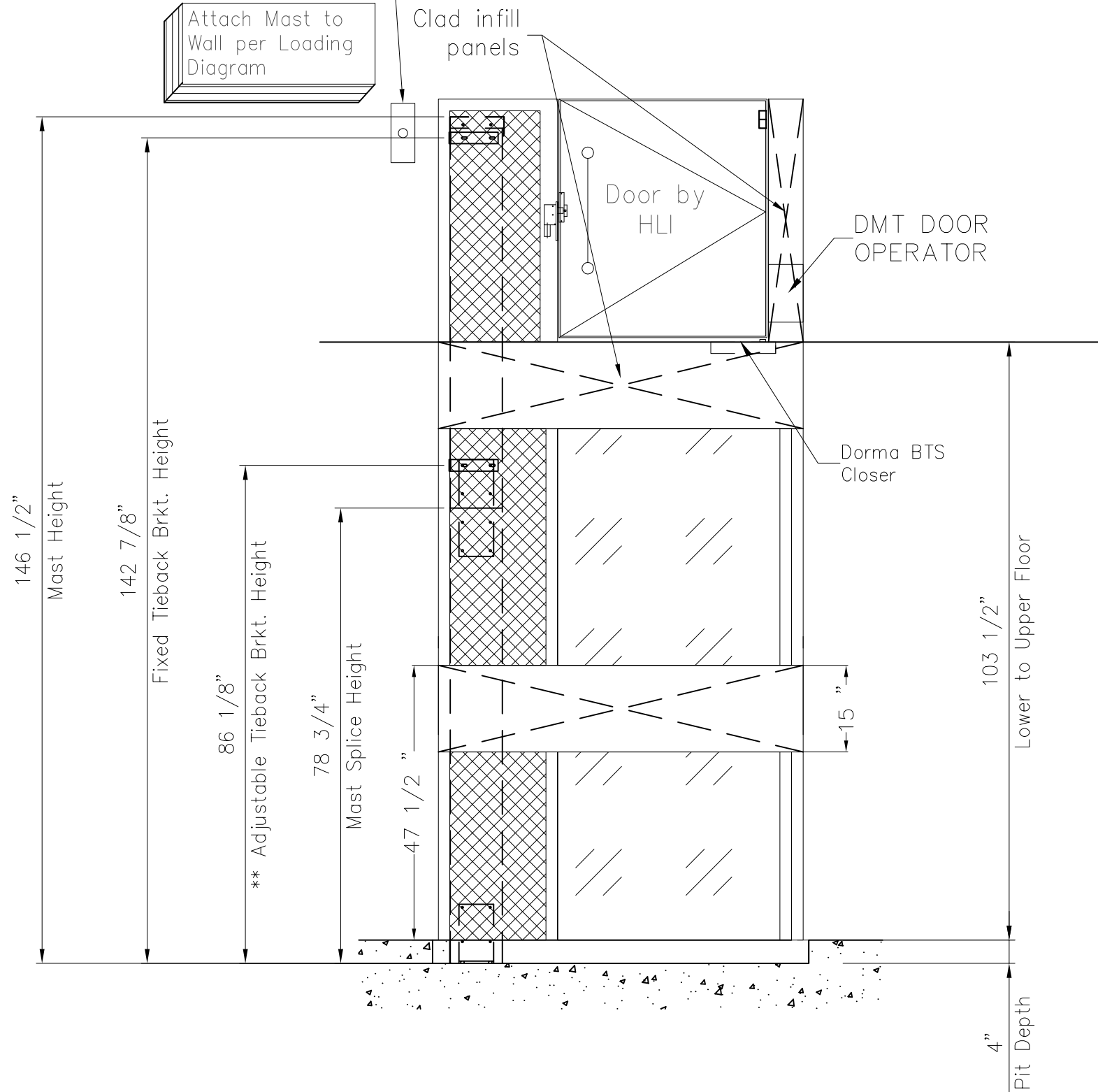
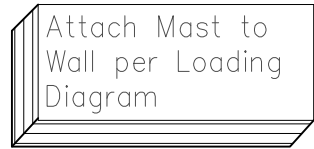
DATE:	PROJECT NO.
08-28-2013	13H08-1

TYPE OF LIFT:	PAGE NO.
GVL-SW-120	3 OF 11





Hall stations to be located in field
See details pg.8



UPPER LANDING VIEW

GC NOTE: ALL CRITICAL SITE CONDITIONS MUST BE VERIFIED IN THE FIELD AFTER THE AREA HAS BEEN PREPARED AND PRIOR TO THE LIFT BEING RELEASED. EXTRA COSTS INCURRED WITH MODIFYING THE UNIT AT THE FACTORY BY THE MANUFACTURER DUE TO CHANGES IN THE SITE CONDITIONS WILL BE THE RESPONSIBILITY OF THE GENERAL CONTRACTOR. TOLERANCES IN FIELD DIMENSIONS ARE +/- 1/8 INCH; NOTIFICATION TO HANDI-LIFT OF ANY VARIATIONS FROM THIS TOLERANCE IS THE RESPONSIBILITY OF THE GENERAL CONTRACTOR.

The information contained in this drawing constitutes the Intellectual Property, including, but not limited to knowledge, trade secrets, and proprietary information which is the exclusive property of Handi-Lift, Inc. All information contained in this drawing is to be held in the strictest confidence by the recipient, and is not to be copied, disclosed to, or transmitted to any third parties without the express written authorization of Handi-Lift, Inc. ©2008 Handi-Lift, Inc.

CODE NOTE
THIS INSTALLATION SHALL COMPLY WITH 2008 NYC BUILDING CODE WITH JAN. 1-DEC. 31, 2011 SUPPLEMENT, AND ASME A18.1 1999, WITH ADDENDA A18.1a-2001 PART 2.

REVISION 1	10-3-13 JC
REVISION 2	10-11-13 JC

NOT TO SCALE

WILLIAM MADDEN P. E.
63 MARY STREET
LODI, NEW JERSEY 07644

HANDILIFT
HANDI-LIFT, INC.
730 GARDEN STREET
CARLSTADT, NEW JERSEY 07072 U.S.A.
PH: (800) 432-LIFT FAX: (201) 933-0050
INTERNET ADDRESS: www.handi-lift.com

DRAWN BY	BK	CHECKED BY	DB
----------	-----------	------------	-----------

LOCATION:
URBAN OUTFITTERS
98 NORTH 6TH ST
BROOKLYN, NY 11211

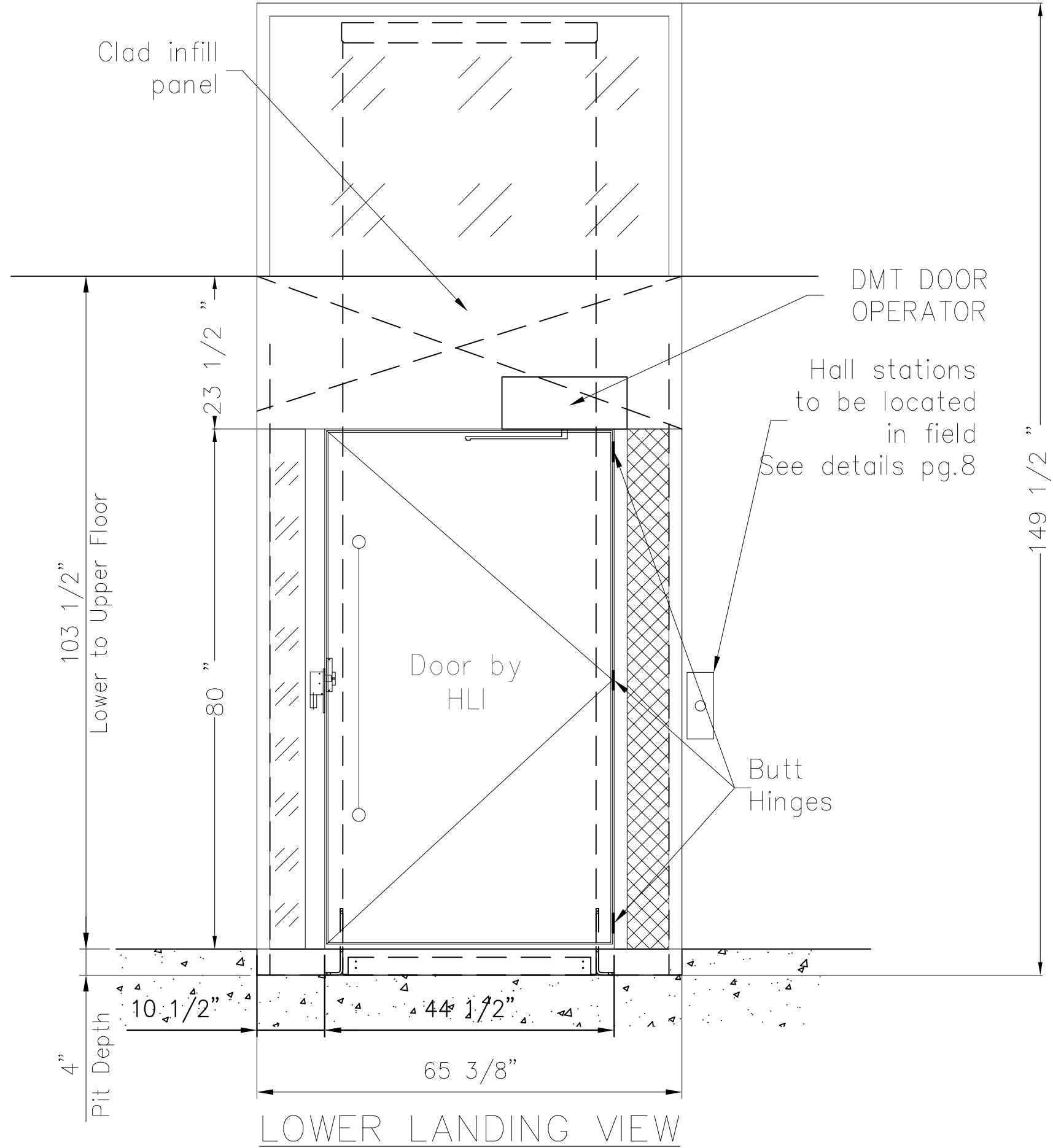
DATE:	PROJECT NO.
08-28-2013	13H08-1

TYPE OF LIFT:	PAGE NO.
GVL-SW-120	4 OF 11

AREA LIGHTING



Area lighting by others. Must be independent of lift electrics w/ minimum 5 FTC or 54 LUX ambient within shaft and on platform at each landing. Emergency lighting by others as required by local codes.



LOWER LANDING VIEW

GC NOTE: ALL CRITICAL SITE CONDITIONS MUST BE VERIFIED IN THE FIELD AFTER THE AREA HAS BEEN PREPARED AND PRIOR TO THE LIFT BEING RELEASED, EXTRA COSTS INCURRED WITH MODIFYING THE UNIT AT THE FACTORY BY THE MANUFACTURER DUE TO CHANGES IN THE SITE CONDITIONS WILL BE THE RESPONSIBILITY OF THE GENERAL CONTRACTOR. TOLERANCES IN FIELD DIMENSIONS ARE +/- 1/8 INCH; NOTIFICATION TO HANDI-LIFT OF ANY VARIATIONS FROM THIS TOLERANCE IS THE RESPONSIBILITY OF THE GENERAL CONTRACTOR.

The information contained in this drawing constitutes the Intellectual Property, including, but not limited to knowledge, trade secrets, and proprietary information which is the exclusive property of Handi-Lift, Inc. All information contained in this drawing is to be held in the strictest confidence by the recipient, and is not to be copied, disclosed to, or transmitted to any third parties without the express written authorization of Handi-Lift, Inc. ©2008 Handi-Lift, Inc.

CODE NOTE
THIS INSTALLATION SHALL COMPLY WITH 2008 NYC BUILDING CODE WITH JAN. 1-DEC. 31, 2011 SUPPLEMENT, AND ASME A18.1 1999, WITH ADDENDA A18.1a-2001 PART 2.

REVISION 1	10-3-13 JC
------------	------------

REVISION 2	10-11-13 JC
------------	-------------

NOT TO SCALE

WILLIAM MADDEN P. E.
63 MARY STREET
LODI, NEW JERSEY 07644

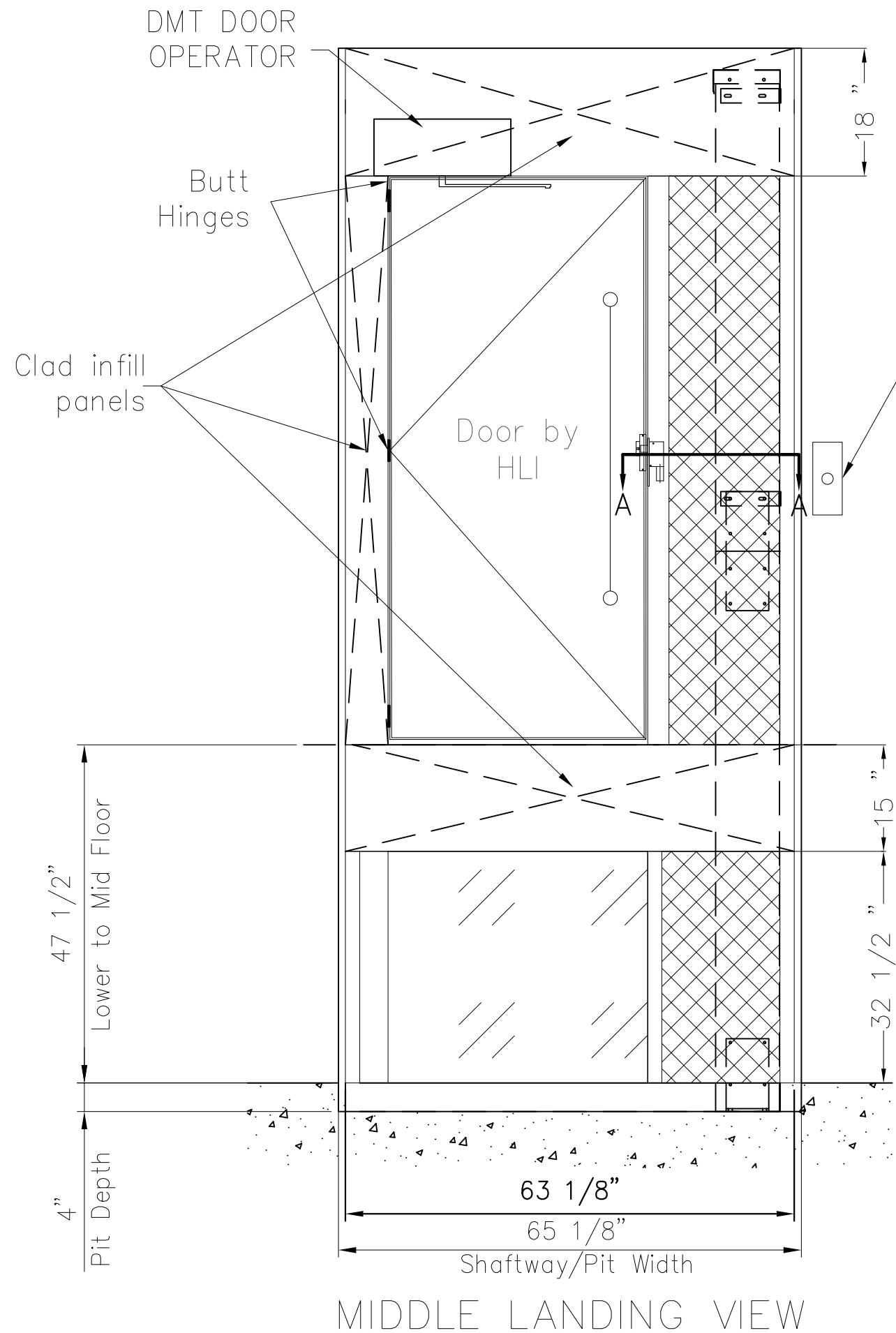
HANDILIFT
HANDI-LIFT, INC.
730 GARDEN STREET
CARLSTADT, NEW JERSEY 07072 U.S.A.
PH: (800) 432-LIFT FAX: (201) 933-0050
INTERNET ADDRESS: www.handi-lift.com

DRAWN BY	BK	CHECKED BY	DB
----------	----	------------	----

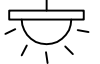
LOCATION:
URBAN OUTFITTERS
98 NORTH 6TH ST
BROOKLYN, NY 11211

DATE: 08-28-2013	PROJECT NO. 13H08-1
---------------------	------------------------

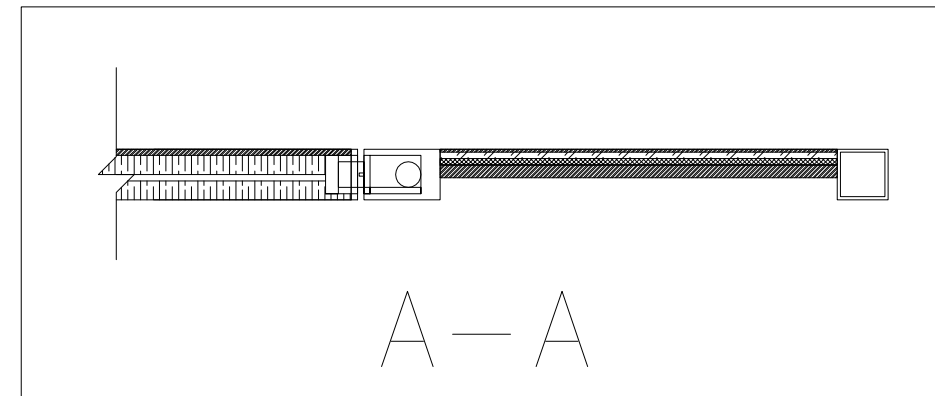
TYPE OF LIFT: GVL-SW-120	PAGE NO. 5 OF 11
-----------------------------	---------------------



AREA LIGHTING



Area lighting by others. Must be independent of lift electrics w/ minimum 5 FTC or 54 LUX ambient within shaft and on platform at each landing. Emergency lighting by others as required by local codes.



GC NOTE: ALL CRITICAL SITE CONDITIONS MUST BE VERIFIED IN THE FIELD AFTER THE AREA HAS BEEN PREPARED AND PRIOR TO THE LIFT BEING RELEASED, EXTRA COSTS INCURRED WITH MODIFYING THE UNIT AT THE FACTORY BY THE MANUFACTURER DUE TO CHANGES IN THE SITE CONDITIONS WILL BE THE RESPONSIBILITY OF THE GENERAL CONTRACTOR. TOLERANCES IN FIELD DIMENSIONS ARE +/- 1/8 INCH; NOTIFICATION TO HANDI-LIFT OF ANY VARIATIONS FROM THIS TOLERANCE IS THE RESPONSIBILITY OF THE GENERAL CONTRACTOR.

The information contained in this drawing constitutes the Intellectual Property, including, but not limited to knowledge, trade secrets, and proprietary information which is the exclusive property of Handi-Lift, Inc. All information contained in this drawing is to be held in the strictest confidence by the recipient, and is not to be copied, disclosed to, or transmitted to any third parties without the express written authorization of Handi-Lift, Inc. ©2008 Handi-Lift, Inc.

CODE NOTE
THIS INSTALLATION SHALL COMPLY WITH 2008 NYC BUILDING CODE WITH JAN. 1-DEC. 31, 2011 SUPPLEMENT, AND ASME A18.1 1999, WITH ADDENDA A18.1a-2001 PART 2.

REVISION 1	10-3-13 JC
REVISION 2	10-11-13 JC

NOT TO SCALE

WILLIAM MADDEN P. E.
63 MARY STREET
LODI, NEW JERSEY 07644

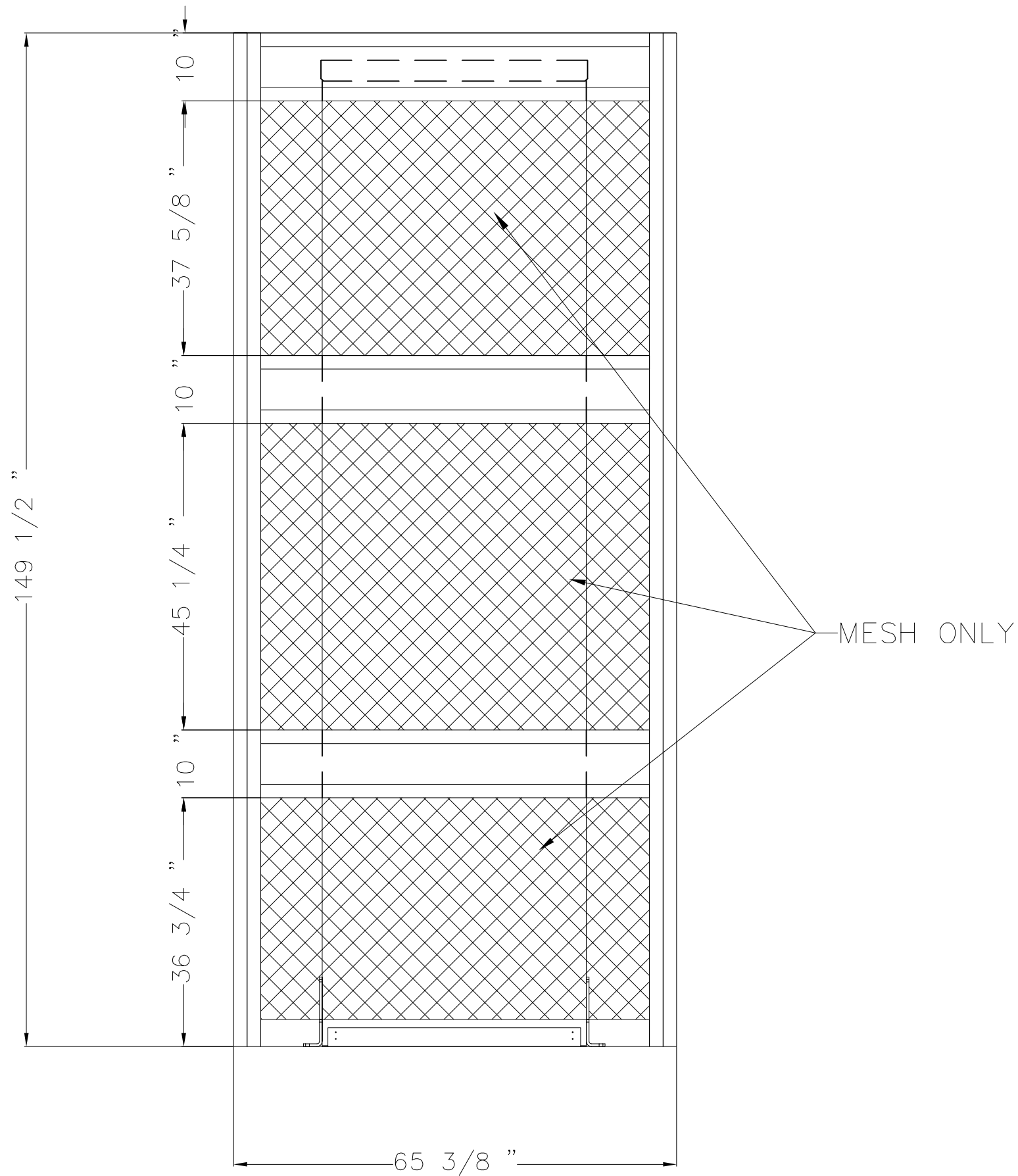
HANDiLiFT
HANDI-LIFT, INC.
730 GARDEN STREET
CARLSTADT, NEW JERSEY 07072 U.S.A.
PH: (800) 432-LIFT FAX: (201) 933-0050
INTERNET ADDRESS: www.handi-lift.com

DRAWN BY	BK	CHECKED BY	DB
-----------------	-----------	-------------------	-----------

LOCATION:
URBAN OUTFITTERS
98 NORTH 6TH ST
BROOKLYN, NY 11211

DATE:	PROJECT NO.
08-28-2013	13H08-1

TYPE OF LIFT:	PAGE NO.
GVL-SW-120	6 OF 11



MAST SIDE VIEW

GC NOTE: ALL CRITICAL SITE CONDITIONS MUST BE VERIFIED IN THE FIELD AFTER THE AREA HAS BEEN PREPARED AND PRIOR TO THE LIFT BEING RELEASED, EXTRA COSTS INCURRED WITH MODIFYING THE UNIT AT THE FACTORY BY THE MANUFACTURER DUE TO CHANGES IN THE SITE CONDITIONS WILL BE THE RESPONSIBILITY OF THE GENERAL CONTRACTOR. TOLERANCES IN FIELD DIMENSIONS ARE +/- 1/8 INCH; NOTIFICATION TO HANDI-LIFT OF ANY VARIATIONS FROM THIS TOLERANCE IS THE RESPONSIBILITY OF THE GENERAL CONTRACTOR.

The information contained in this drawing constitutes the Intellectual Property, including, but not limited to knowledge, trade secrets, and proprietary information which is the exclusive property of Handi-Lift, Inc. All information contained in this drawing is to be held in the strictest confidence by the recipient, and is not to be copied, disclosed to, or transmitted to any third parties without the express written authorization of Handi-Lift, Inc. ©2008 Handi-Lift, Inc.

CODE NOTE
THIS INSTALLATION SHALL COMPLY WITH 2008 NYC BUILDING CODE WITH JAN. 1-DEC. 31, 2011 SUPPLEMENT, AND ASME A18.1 1999, WITH ADDENDA A18.1a-2001 PART 2.

REVISION 1	10-3-13 JC
REVISION 2	10-11-13 JC

NOT TO SCALE

WILLIAM MADDEN P. E.
63 MARY STREET
LODI, NEW JERSEY 07644

HANDiLiFT
HANDI-LIFT, INC.
730 GARDEN STREET
CARLSTADT, NEW JERSEY 07072 U.S.A.
PH: (800) 432-LIFT FAX: (201) 933-0050
INTERNET ADDRESS: www.handi-lift.com

DRAWN BY	BK	CHECKED BY	DB
-----------------	-----------	-------------------	-----------

LOCATION:
URBAN OUTFITTERS
98 NORTH 6TH ST
BROOKLYN, NY 11211

DATE: 08-28-2013	PROJECT NO. 13H08-1
---------------------	------------------------

TYPE OF LIFT: GVL-SW-120	PAGE NO. 7 OF 11
-----------------------------	---------------------

GC NOTE: ALL CRITICAL SITE CONDITIONS MUST BE VERIFIED IN THE FIELD AFTER THE AREA HAS BEEN PREPARED AND PRIOR TO THE LIFT BEING RELEASED, EXTRA COSTS INCURRED WITH MODIFYING THE UNIT AT THE FACTORY BY THE MANUFACTURER DUE TO CHANGES IN THE SITE CONDITIONS WILL BE THE RESPONSIBILITY OF THE GENERAL CONTRACTOR. TOLERANCES IN FIELD DIMENSIONS ARE +/- 1/8 INCH; NOTIFICATION TO HANDI-LIFT OF ANY VARIATIONS FROM THIS TOLERANCE IS THE RESPONSIBILITY OF THE GENERAL CONTRACTOR.

The information contained in this drawing constitutes the Intellectual Property, including, but not limited to knowledge, trade secrets, and proprietary information which is the exclusive property of Handi-Lift, Inc. All information contained in this drawing is to be held in the strictest confidence by the recipient, and is not to be copied, disclosed to, or transmitted to any third parties without the express written authorization of Handi-Lift, Inc. ©2008 Handi-Lift, Inc.

CODE NOTE
THIS INSTALLATION SHALL COMPLY WITH 2008 NYC BUILDING CODE WITH JAN. 1-DEC. 31, 2011 SUPPLEMENT, AND ASME A18.1 1999, WITH ADDENDA A18.1a-2001 PART 2.

REVISION 1	10-3-13 JC
------------	------------

REVISION 2	10-11-13 JC
------------	-------------

NOT TO SCALE

WILLIAM MADDEN P. E.
63 MARY STREET
LODI, NEW JERSEY 07644

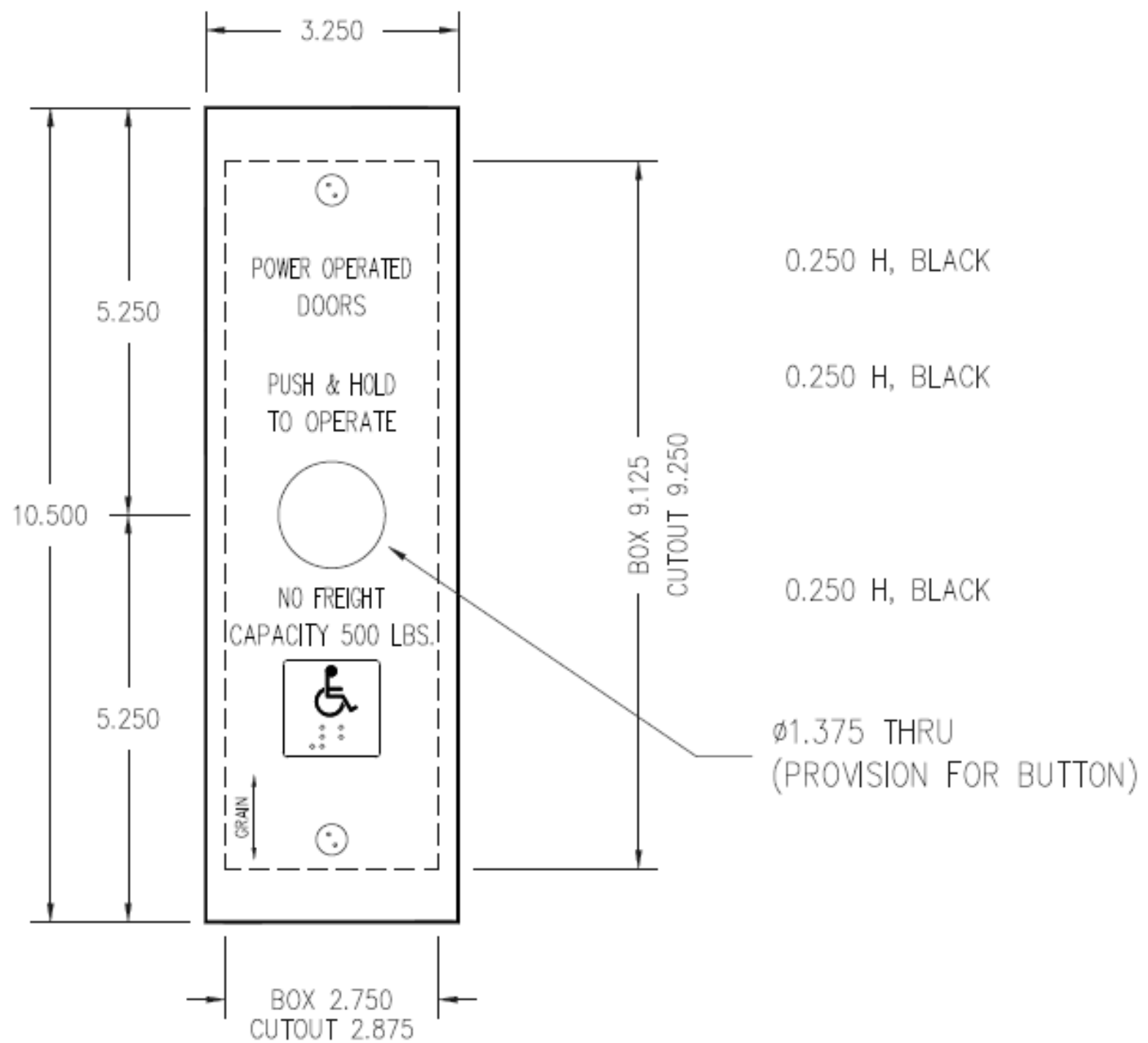
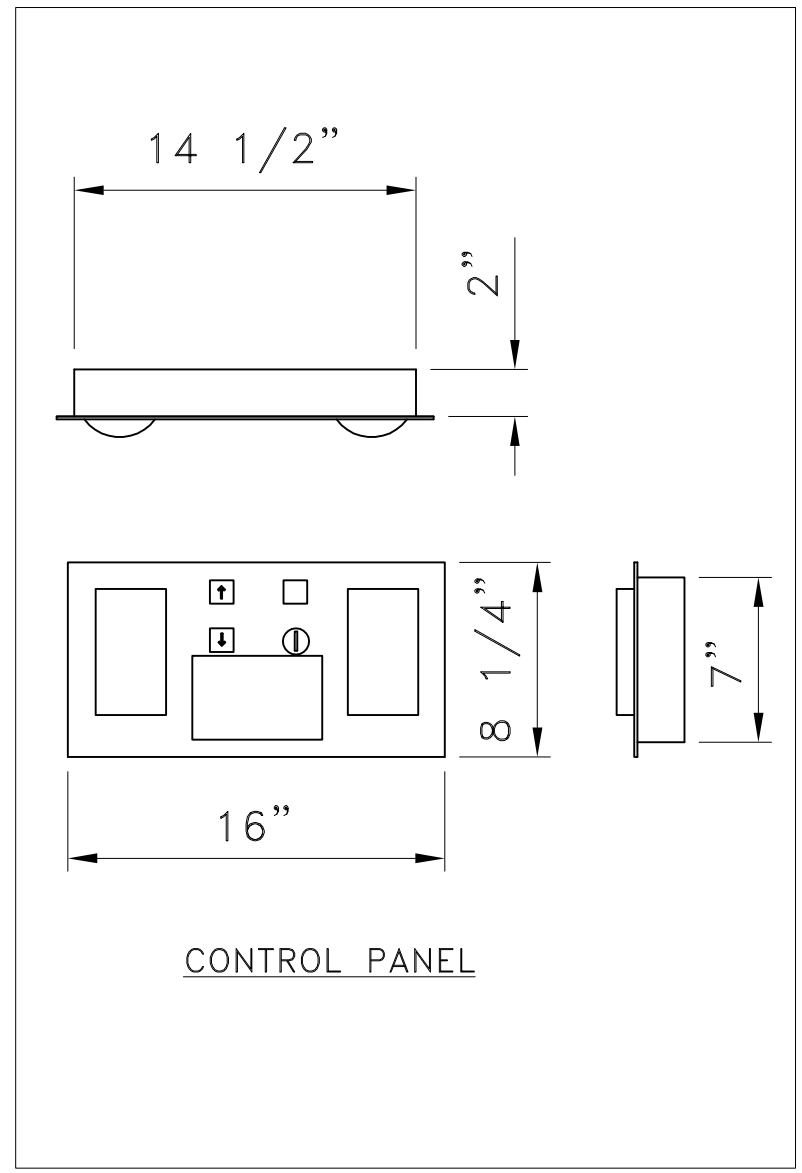
HANDILIFT
HANDI-LIFT, INC.
730 GARDEN STREET
CARLSTADT, NEW JERSEY 07072 U.S.A.
PH: (800) 432-LIFT FAX: (201) 933-0050
INTERNET ADDRESS: www.handi-lift.com

DRAWN BY	BK	CHECKED BY	DB
-----------------	-----------	-------------------	-----------

LOCATION:
URBAN OUTFITTERS
98 NORTH 6TH ST
BROOKLYN, NY 11211

DATE:	PROJECT NO.
08-28-2013	13H08-1

TYPE OF LIFT:	PAGE NO.
GVL-SW-120	9 OF 11



BOX DEPTH: 3.000

GC NOTE: ALL CRITICAL SITE CONDITIONS MUST BE VERIFIED IN THE FIELD AFTER THE AREA HAS BEEN PREPARED AND PRIOR TO THE LIFT BEING RELEASED, EXTRA COSTS INCURRED WITH MODIFYING THE UNIT AT THE FACTORY BY THE MANUFACTURER DUE TO CHANGES IN THE SITE CONDITIONS WILL BE THE RESPONSIBILITY OF THE GENERAL CONTRACTOR. TOLERANCES IN FIELD DIMENSIONS ARE +/- 1/8 INCH; NOTIFICATION TO HANDI-LIFT OF ANY VARIATIONS FROM THIS TOLERANCE IS THE RESPONSIBILITY OF THE GENERAL CONTRACTOR.

The information contained in this drawing constitutes the Intellectual Property, including, but not limited to knowledge, trade secrets, and proprietary information which is the exclusive property of Handi-Lift, Inc. All information contained in this drawing is to be held in the strictest confidence by the recipient, and is not to be copied, disclosed to, or transmitted to any third parties without the express written authorization of Handi-Lift, Inc. ©2008 Handi-Lift, Inc.

CODE NOTE
THIS INSTALLATION SHALL COMPLY WITH 2008 NYC BUILDING CODE WITH JAN. 1-DEC. 31, 2011 SUPPLEMENT, AND ASME A18.1 1999, WITH ADDENDA A18.1a-2001 PART 2.

REVISION 1	10-3-13 JC
REVISION 2	10-11-13 JC

NOT TO SCALE

WILLIAM MADDEN P. E.
63 MARY STREET
LODI, NEW JERSEY 07644

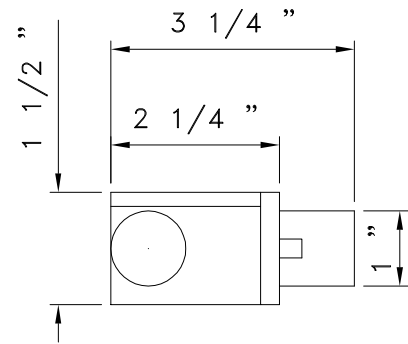
HANDILIFT
HANDI-LIFT, INC.
730 GARDEN STREET
CARLSTADT, NEW JERSEY 07072 U.S.A.
PH: (800) 432-LIFT FAX: (201) 933-0050
INTERNET ADDRESS: www.handi-lift.com

DRAWN BY	BK	CHECKED BY	DB
----------	-----------	------------	-----------

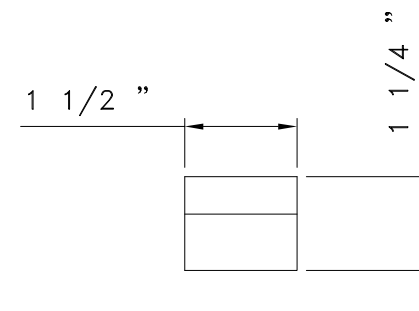
LOCATION:
URBAN OUTFITTERS
98 NORTH 6TH ST
BROOKLYN, NY 11211

DATE:	PROJECT NO.
08-28-2013	13H08-1

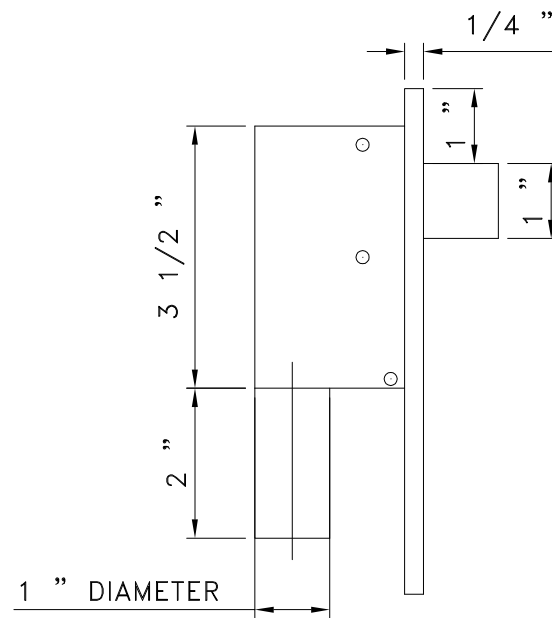
TYPE OF LIFT:	PAGE NO.
GVL-SW-120	10 OF 11



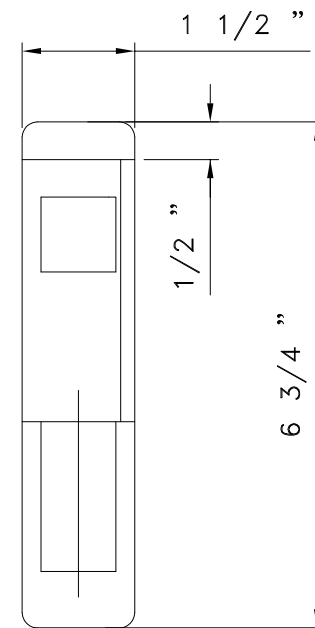
GARAVENTA POWER LOCK 2000 INTERLOCK
PLAN VIEW



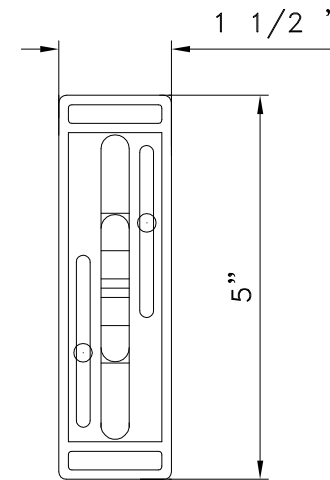
GARAVENTA POWER LOCK 2000
INTERLOCK RECEIVER
PLAN VIEW



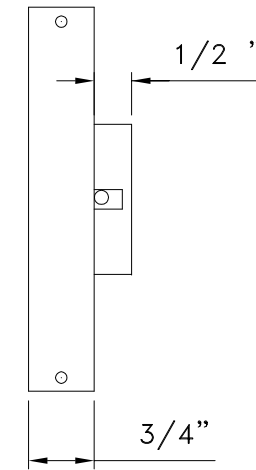
GARAVENTA POWER LOCK 2000 INTERLOCK
SIDE VIEW



GARAVENTA POWER LOCK 2000 INTERLOCK
FRONT VIEW



GARAVENTA POWER LOCK 2000
INTERLOCK RECEIVER
SIDE VIEW



GARAVENTA POWER LOCK 2000
INTERLOCK RECEIVER
FRONT VIEW

GARAVENTA
POWER
LOCK
2000
INTERLOCK

GARAVENTA
POWER
LOCK
2000
INTERLOCK
RECEIVER

GENESIS VERTICAL PLATFORM LIFT:

Code Reference: See Title Block

General: Color – See Custom Finish Notes on Plan View (Pg.1)
 Indoor Unit – Pit Mount
 Number of Stops – Three stop kit

Drive Mast: Model – GVL-SW-120
 Chain Hydraulic drive system c/w Continuous Mains Power with Auxiliary Battery Power System,
 Platform Emergency Lowering (shipped loose), Shoring Pin, & Pressure Gauge
 Motor – 2.2 kW, 24 VDC
 Travel Speed – 227 kg @ 5.2 m/min [500 lb @ 17 ft/min]
 Power Supply – 120 VAC, single phase, 60 Hz, on a dedicated 20 amp. circuit
 Equipped with – Split Mast Kit

Controls: Platform Controls – Push-Button Type c/w Illuminated Directional Buttons, Courtesy
 Lighting, Illuminated Round (push/pull) Emergency Stop Switch/Audible Alarm
 Lower Landing Call Station – Push Button Surface Mount
 Middle Landing Call Station – Push Button Surface Mount
 Upper Landing Call Station – Push Button Surface Mount

Platform: Size – Large c/w grab rail, anti-skid deck and 1100mm [43 1/4"] high walls
 Configuration – On/Off Different Sides (90°/180°) Exit/Entry
 Capacity – Maximum 227 kg [500 lb] operating load

Door/Gates: See Drawing

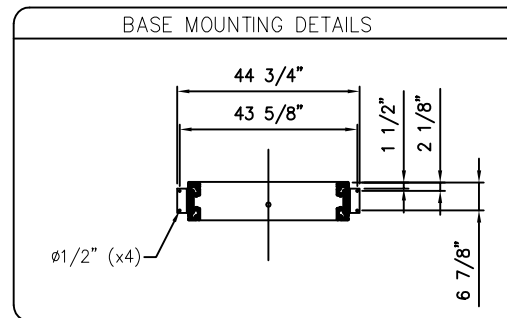
Shaftway: Total Unit Weight – Approximately 317 kg [698 lb]
 Lifting Ht. (H2) – 1207mm [47 1/2"] lower floor to middle floor plus 102mm [4"] deep pit
 Lifting Ht. (H1) – 2667mm [105"] lower floor to upper floor plus 102mm [4"] deep pit
 Equipped with – Mast Back Panels

SYM.	DESCRIPTION	VALUE (MAX.)
F1 =	PAYLOAD (MAX.)	2224 N [500 lb]
	CAR (PLATFORM) WEIGHT	1110 N [250 lb]
F2	MAST WEIGHT	2002 N [450 lb]
F3	FLOOR REACTION	3225 N [725 lb]
F4	FLOOR REACTION	3225 N [725 lb]
F5-1	TIEBACK REACTION #1	934 N [210 lb]
F5-2	TIEBACK REACTION #2	934 N [210 lb]

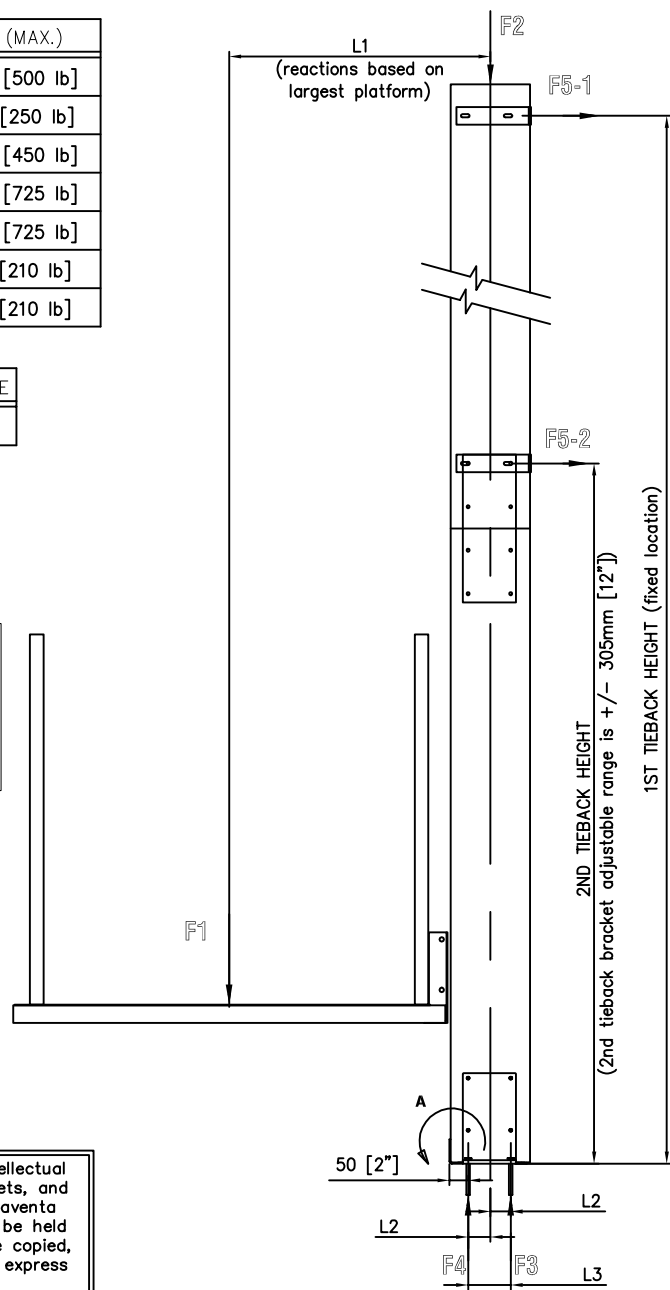
L1	L2	L3	PLATFORM SIZE
764 [30.08"]	61 [2.40"]	122 [4.88"]	LARGE

MODEL	MAST HEIGHT	TIEBACK HEIGHT
120"	3718 [146.38"]	3625 [143.0"]
		2187 [86.0"]

SPECIAL NOTE:
 These are reaction forces generated by the lift. Adhere to local building codes, regulations, and safety factors for supporting structures. Consult a structural engineer or architect in your jurisdiction.



The information contained in this drawing constitutes the Intellectual Property, including, but not limited to, knowledge, trade secrets, and proprietary information which is the exclusive property of Garaventa Accessibility. All information contained in this drawing is to be held in the strictest confidence by the recipient, and is not to be copied, disclosed to, or transmitted to any third parties without the express written authorization of Garaventa Accessibility.
 © 2005 GARAVENTA ACCESSIBILITY.



DETAIL 1 – SHAFTWAY MODEL LOADING DIAGRAM

GC NOTE: ALL CRITICAL SITE CONDITIONS MUST BE VERIFIED IN THE FIELD AFTER THE AREA HAS BEEN PREPARED AND PRIOR TO THE LIFT BEING RELEASED. EXTRA COSTS INCURRED WITH MODIFYING THE UNIT AT THE FACTORY BY THE MANUFACTURER DUE TO CHANGES IN THE SITE CONDITIONS WILL BE THE RESPONSIBILITY OF THE GENERAL CONTRACTOR. TOLERANCES IN FIELD DIMENSIONS ARE +/- 1/8 INCH; NOTIFICATION TO HANDI-LIFT OF ANY VARIATIONS FROM THIS TOLERANCE IS THE RESPONSIBILITY OF THE GENERAL CONTRACTOR.

The information contained in this drawing constitutes the Intellectual Property, including, but not limited to knowledge, trade secrets, and proprietary information which is the exclusive property of Handi-Lift, Inc. All information contained in this drawing is to be held in the strictest confidence by the recipient, and is not to be copied, disclosed to, or transmitted to any third parties without the express written authorization of Handi-Lift, Inc. ©2008 Handi-Lift, Inc.

CODE NOTE
 THIS INSTALLATION SHALL COMPLY WITH 2008 NYC BUILDING CODE WITH JAN. 1-DEC. 31, 2011 SUPPLEMENT, AND ASME A18.1 1999, WITH ADDENDA A18.1a-2001 PART 2.

REVISION 1	10-3-13 JC
REVISION 2	10-11-13 JC

NOT TO SCALE

WILLIAM MADDEN P. E.
 63 MARY STREET
 LODI, NEW JERSEY 07644

HANDILIFT
 HANDI-LIFT, INC.
 730 GARDEN STREET
 CARLSTADT, NEW JERSEY 07072 U.S.A.
 PH: (800) 432-LIFT FAX: (201) 933-0050
 INTERNET ADDRESS: www.handi-lift.com

DRAWN BY	BK	CHECKED BY	DB
----------	----	------------	----

LOCATION:
 URBAN OUTFITTERS
 98 NORTH 6TH ST
 BROOKLYN, NY 11211

DATE:	PROJECT NO.
08-28-2013	13H08-1

TYPE OF LIFT:	PAGE NO.
GVL-SW-120	11 OF 11